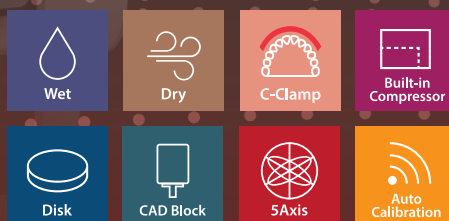


# HIGH FUNCTIONALITY EXCELLENT QUALITY FOR SOFT MATERIALS

The 5-axis chairside milling machine  
for wet and dry machining.

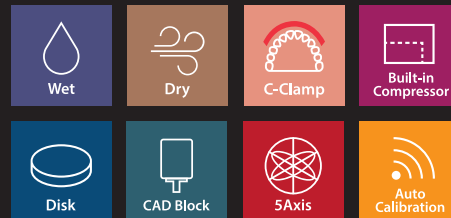
## ARUM 5X-300 series



**ARUM**

# ARUM 5X-300Pro

RPM  
80,000



Maximise Undercut Milling with C-Clamp



Proven Lithium Disilicate Milling



Open System

Efficient Space

Place dust collector, coolant system inside of the stand.



Minimise Noise  
Built-in Air Compressor

12 ATC  
(Automatic Tool Changer)

Easy to Clean

Simple to Change  
Wet - Dry Milling

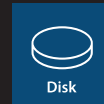
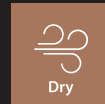
## Materials & Applications Info.

Materials		Applications	
Lithium Disilicate	⊙	Hybrid Abutment	⊙
Nanocomposite	⊙	Inlay & Onlay	⊙
Zirconia	⊙	Crown & Coping	⊙
PMMA	⊙	Crown & Coping Bridge	⊙
PEEK	⊙	Model	⊙
Wax	⊙	Bite Splint	⊙
		Denture	⊙

⊙: High Compatibility / ○: Compatibility / X: Non-Compatibility

# ARUM 5X-300D

RPM  
60,000



## Excellent Expression of Detail

Groove and labial side texture precision machining using ARUM's exclusive 0.3mm tool for zirconia can be processed close to natural teeth.



## Efficient C-Clamp



## Built-in UI

Easy to operate.



## Auto Calibration

Easy to maintain the machine for the beginner users.



## Various tool options, 12 ATC (Automatic Tool Changer)

## Simple and Easy to Install

## Materials & Applications Info.

Materials		Applications	
Lithium Disilicate	X	Hybrid Abutment	⊙
Nanocomposite	⊙	Inlay & Onlay	⊙
Zirconia	⊙	Crown & Coping	⊙
PMMA	⊙	Crown & Coping Bridge	⊙
PEEK	⊙	Model	⊙
Wax	⊙	Bite Splint	⊙
		Denture	⊙

⊙: High Compatibility / ○: Compatibility / X: Non-Compatibility

# ARUM 5X-300Pro



## Efficient C-TYPE JIG

Labial (or Buccal) side texture and undercut area precision processing minimize post-processing time.



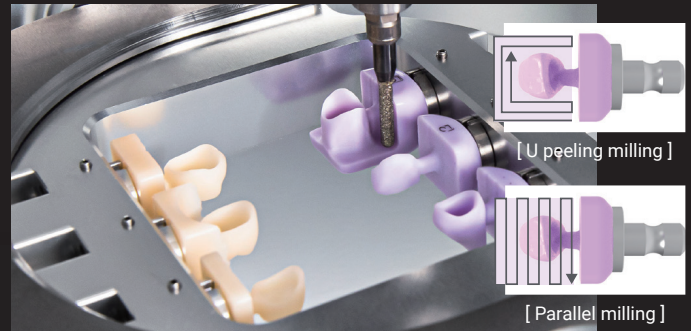
## All in One System

An external compressor is not required, and all additional devices (Dust Collector, Coolant System) are built inside the table to overcome installation space constraint and minimize noise.



## Simple and easy material change

You can easily exchange from disk to CAD block as it uses cartridge type materials.



## High speed 80,000 RPM

By choosing one from 2 modes of roughing process (U peeling milling and Parallel milling), you can process glass ceramic materials more efficiently.

## Specifications

Axis	5 Axis	Drive Mechanism	Ball Screw	
Processing	Wet and Dry	Way System	Linear Guide	
Spindle Power	AC 0.5kw	Machine Size (W*D*H)	568*638*645mm	
Max. RPM	80,000	Total Size (W*D*H)	568*641*1583mm	
A.T.C	12	Weight (Machine / Table)	90kg / 65kg	
Tool Shank (mm)	Ø4	Travel	X,Y,Z axis	167*119.8*94mm
Motor	Stepping		A / B axis	±30° / 360°

\* Products are subject to change without notice to improve quality, function, design or otherwise.

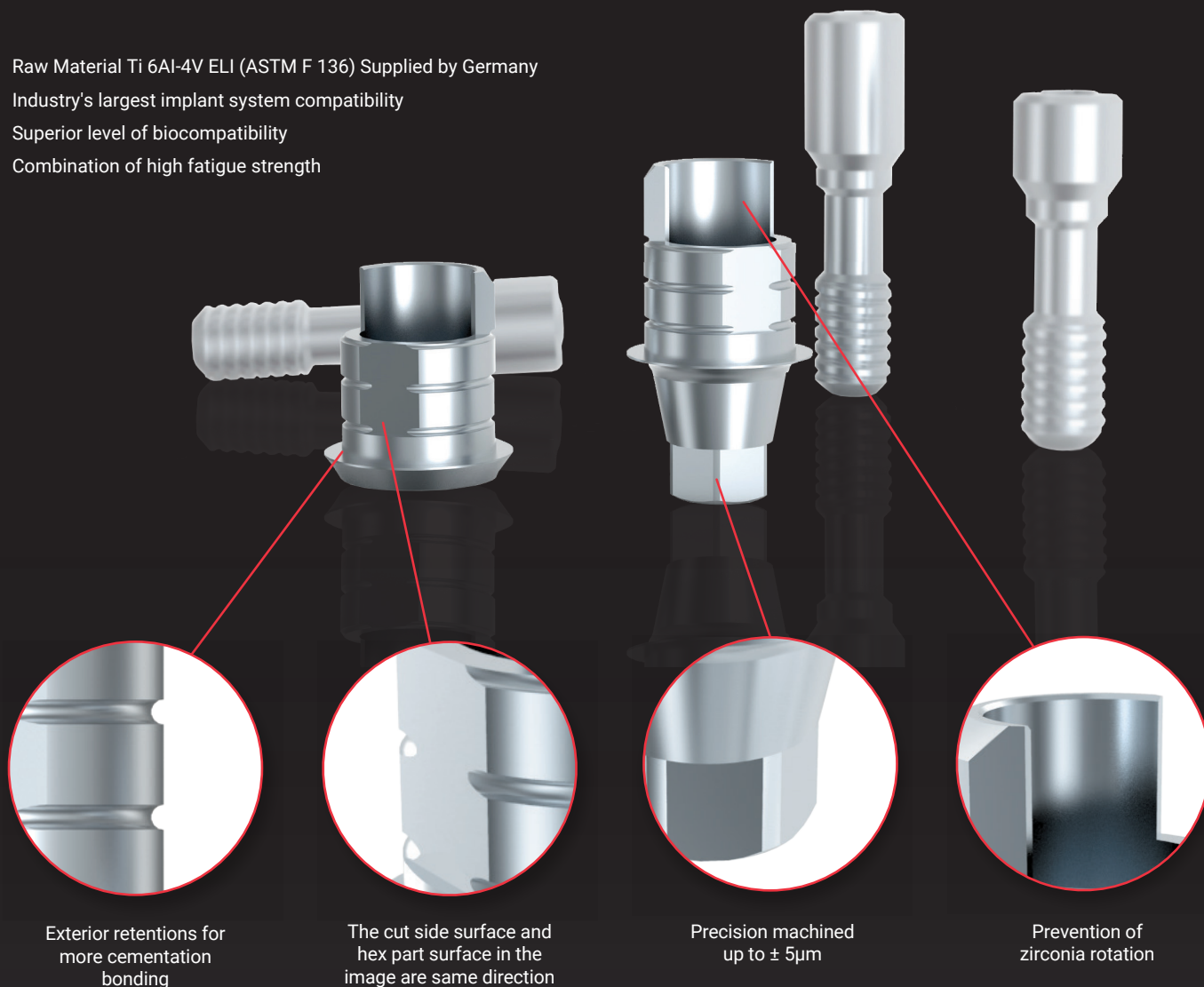
## Tool List

Material	Code	Ø	Size	Material	Code	Ø	Size
Zirconia	ZB-46	2.0	D2.0*L18*50	Glass ceramic	DG-52	2.5	D2.5*L13*44.5
	ZB-47	1.0	D1.0*L16*50		DG-53	1.5	D1.5*L10*44.5
	ZB-48	0.6	D0.6*L10*45		DG-54	1.0	D1.0*L10*44.5
	ZB-65	0.3	D0.3*L12*45		DG-55	0.6	D0.6*L08*41
PMMA	MOB-56	3.0	D3.0*L20*50	Flat endmill	ZF-70	1.7	D1.7*L18*50
	PB-49	2.0	D2.0*L18*50		ZF-75	0.6	D0.6*L08*45
	PB-50	1.5	D1.5*L14*47	T-cutter	TC-80	1.8	D1.8*L08*45
	PB-51	1.0	D1.0*L10*44		TC-98	2.0	D2.0*L08*45

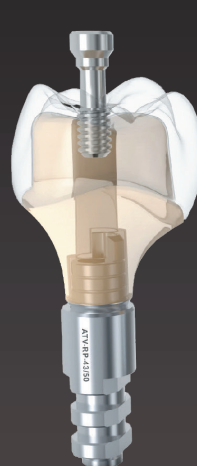
# ARUM

## Angled Ti-base

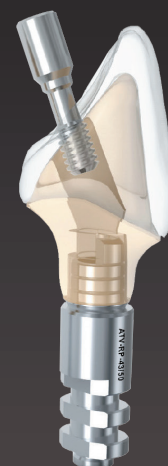
- Raw Material Ti 6Al-4V ELI (ASTM F 136) Supplied by Germany
- Industry's largest implant system compatibility
- Superior level of biocompatibility
- Combination of high fatigue strength



### 2 Clinical Screws Included



**Straight Screw**  
Same as the original screw design



**Angled Screw**

# ARUM

## Digital Analog



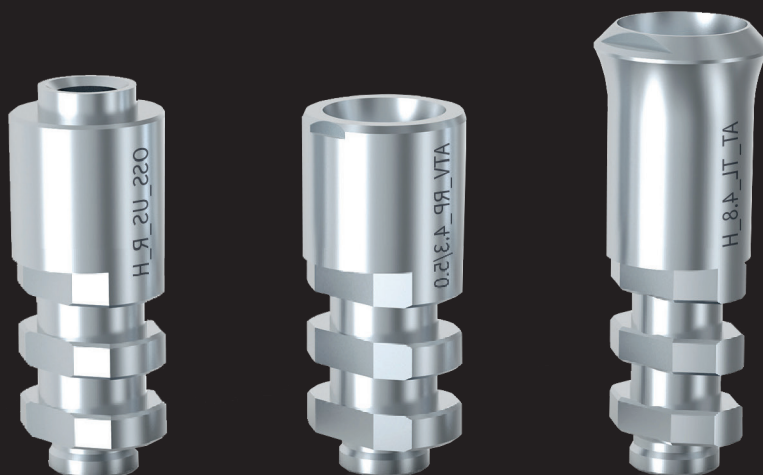
Visit HoilShop!

- Raw Material Stainless Steel 303F
- Industry's largest implant system compatibility
- Precision machined up to  $\pm 5\mu\text{m}$
- For 3D print & Stone model

### ARUM Identification Code

compatible with  
NOBEL BIO CARE® Active™ RP 4.3/5.0

**ATV-RP-43/50**

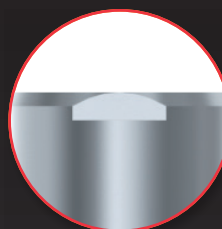


Stone  
Model

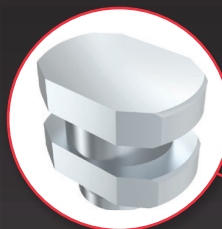
3D Print  
Model



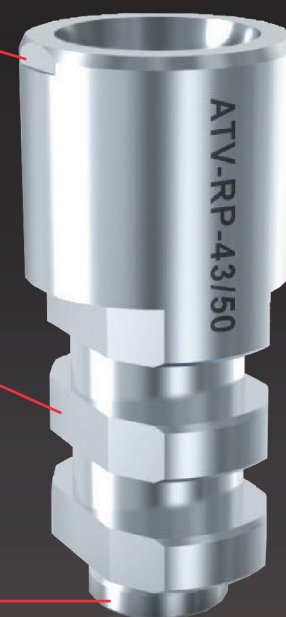
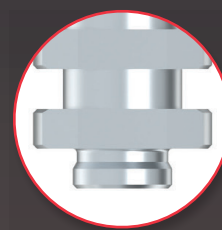
Position Indicator  
3D print & stone model



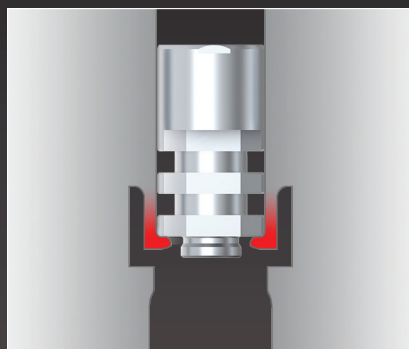
Antirotate Design



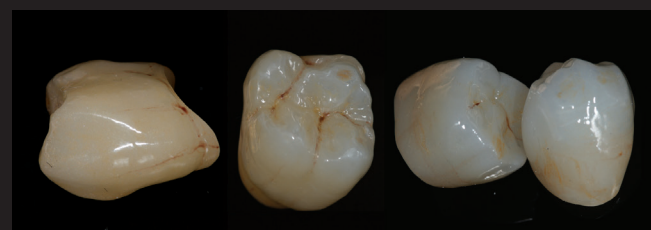
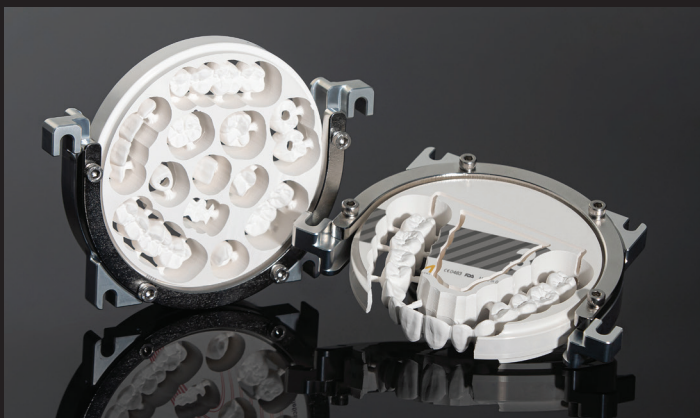
Level Stopper  
for 3D print model &  
stone model



3D Print Model  
with Click System



# ARUM 5X-300D



## Efficient C-TYPE JIG

Labial (or Buccal) side texture and undercut area precision processing minimize post-processing time.

## Like Natural Teeth

Every patient wants a prosthesis that looks natural. With milling the grooved part precisely using ARUM's 0.3mm tool for Zirconia, you can reproduce the teeth that look natural.



## Specifications

Axis	5 Axis	Drive Mechanism	Ball Screw	
Processing	Dry	Way System	Linear Guide	
Spindle Power	AC 0.5kw	Machine Size (W*D*H)	568*638*645mm	
Max. RPM	60,000	Weight (Machine)	90kg	
A.T.C	12	Travel	X,Y,Z axis	167*119.8*94mm
Tool Shank (mm)	Ø4		A / B axis	±30° / 360°
Motor	Stepping			

## Tool List

Material	Code	Ø	Size	Material	Code	Ø	Size
Zirconia	ZB-46	2.0	D2.0*L18*50	Glass ceramic	DG-52	2.5	D2.5*L13*44.5
	ZB-47	1.0	D1.0*L16*50		DG-53	1.5	D1.5*L10*44.5
	ZB-48	0.6	D0.6*L10*45		DG-54	1.0	D1.0*L10*44.5
	ZB-65	0.3	D0.3*L12*45		DG-55	0.6	D0.6*L08*41
PMMA	MOB-56	3.0	D3.0*L20*50	Flat endmill	ZF-70	1.7	D1.7*L18*50
	PB-49	2.0	D2.0*L18*50		ZF-75	0.6	D0.6*L08*45
	PB-50	1.5	D1.5*L14*47	T-cutter	TC-80	1.8	D1.8*L08*45
	PB-51	1.0	D1.0*L10*44		TC-98	2.0	D2.0*L08*45

WE SHARE THE EXPERIENCE  
with  
PERFECTION

GET IN TOUCH

---

Arum 3D Solutions Ltd.

+44 (0)207 388 1390



Scan for whatsapp!