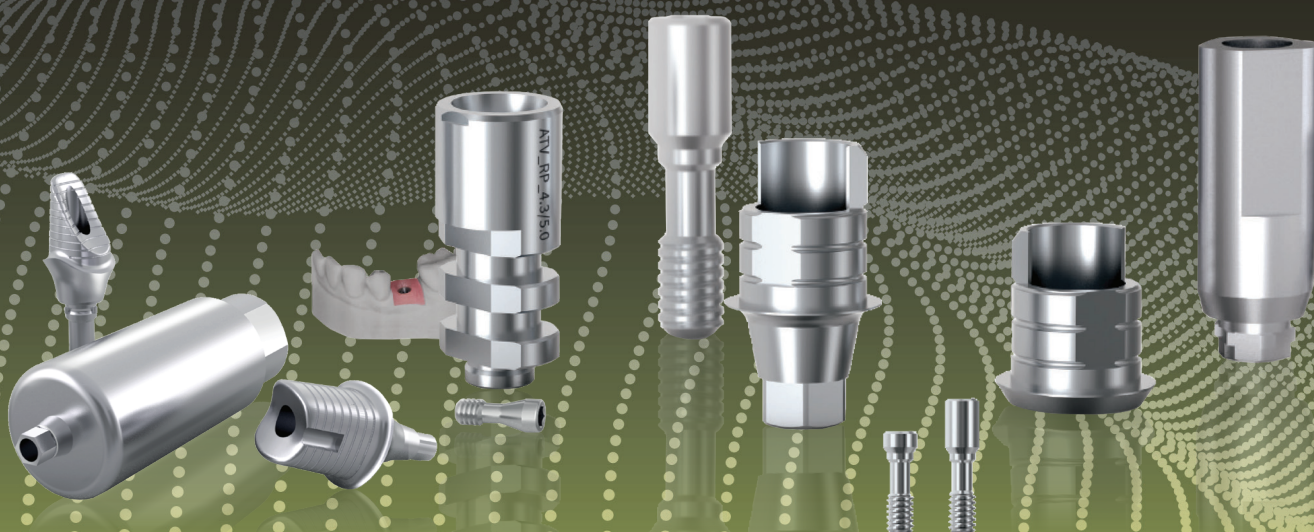


SMART AND SIMPLE SYSTEM FOR DENTAL LAB AND PRACTICE

The largest consumable system range in the world
with the exceptional quality.

ARUM Implant Prosthetic Component



ARUM

Consumable Line-up

New system is updated regularly.
Please check the latest at our e-shop, www.arumdentalshop.com

A series compatible with

ADIN® CLOSEFIT™ / TOUAREG™ S&OS / Multi-Unit® / UniFit™
ALPHA-BIO TEC® Internal Hex / CONCIAL / Multi-Unit®
ANTHOGYR® Axiom® BL / Axiom® TL / AnthoFit® OI / Multi-Unit®
ASTRA TECH™ OsseoSpeed™ / EV™ / EV™ PROFILE
/ Multi-Unit® / EV™ Multi-Base
AVINENT® OCEAN

B series compatible with

BIO3 IMPLANT Conical Connection
BEGO® Internal / Multi-Unit®
BICON®
BIO COMP DENTAL INTERNAL HEX / Multi-Unit®
BIOHORIZONS® External® / Internal® / Multi-Unit®
BIOMET 3i® External® / Certain® / Multi-Unit®
BIONER IMPLANT
BIOTECH® BIS 3.6 EXTERNAL / BIS Octagone Interne /
Kontakt / Multi-Unit®
BrainBase Corporation® MYTIS® Arrow Implant
BREDENT Medical SKY® / Copa SKY® / Multi-Unit®
BTI® INTERNA® / EXTERNA® / Multi-Unit®
BTK® Multi-Unit®
B&B DENTAL Conexa® / Multi-Unit®

C series compatible with

CAMLOG® CAMLOG® / Multi / iSy®
CONELOG® CONELOG® / Multi
CHAMPION Multi
CLC conic™
CONEXAO® HI
COR VENT Internal Hex
CORTEX® CORTEX® / Multi-Unit®
COWELLMEDI® INNO Internal
C-TECH® Bone level / Esthetic Line / Multi-Unit

D series compatible with

DEEP®
DENTIS® s-clean / i-clean / Save / Multi-Unit®
DENTAURUM® TIO
DENTIUM® SuperLine / SimpleLine / NR LINE / Multi-Unit®
DENTSPLY® Ankylos® / Ankylos® Blance base / Xive® / Xive®
Multi-Unit®
DIO® SM / SS / UF / UF Multi-Unit
DYNA® PUSHIN Octalock®

E series compatible with

EBI®
EDISON MEDICAL® Clicq Multi-Unit®
EUROTEKNIKA™ Aesthetica / Naturactis/Naturall+/Natea+
/ Multi-Unit

G series compatible with

GC Aadva™
Global D® Tekka® In-kone / Multi-Unit®

H series compatible with

HIOSEN® ET / SS / Multi-Unit
HumanTech RATIO®

I series compatible with

IPD Multi-Unit
iRES® Internal Hex 2.5mm / Internal Octa Tissue / Multi-Unit
IMPLANT DIRECT® Legacy™ / InterActive™ / Swish Active™ / Swish
Plus™ / Tri-Lobe™ / Multi-Unit®
IMPLANT SWISS® Bone Level / Multi-Unit 4.8
INTRA LOCK GOLD & BLUE

J series compatible with

J DENTAL CARE® JD Evolution® / JD Evolution® Plus+ / JD
Icon® / JD Icon® Plus+ / JD OCTA® / Multi-Unit

Consumable Line-up

New system is updated regularly.
Please check the latest at our e-shop, www.arumdentalshop.com

K series compatible with

KENTEC®
KEYSTONE® Prima Connex®
KYOCERA® FINESIA® Bone Level / Poieix

L series compatible with

LASAK Bioniq® / Multi-Unit
LEADER Italia® Mores Connection

M series compatible with

Medentis Medical® ICX® Active Master / ICX® / ICX® Multi-Unit
MEGAGEN® Anyridge / AnyONE / Exfell / EZ Plus / MINI /
MegaFix / RESCUE / Multi-Unit®
MIS® C1 / V3 / Internal Hexagon / Multi-Unit / Multi-Unit (New)
MSDI Alef-Spiral Internal Hex

N series compatible with

NEOBIOTECH® IS SYSTEM / IT SYSTEM / IS ACTIVE SCRP
NEODENT® CM / GM / External / CM Conical / GM Conical
NEOSS Pro Active® / Access®
NOBEL BIO CARE® Active™ / Branemark® / Replace Select™ /
Multi-Unit™ / Multi-Unit™ AESTHETIC/ N1™
NORIS® INTERNA HEX / Multi-Unit
NUCLE® OSS T6 BONELEVEL

O series compatible with

OSTEOCARE Internal Hex
OSSTEM® GS(TS) / SS / SS OCTA Multi-Unit / US / Multi-Unit
OXY IMPLANT® K1 LINE / PSK
OXY K1 Line/PSK Multi-Unit
OXY FIXO Multi-Unit

P series compatible with

PHIBO® TSH
PLATON® PL-SUB
PALTOP® INTERNAL HEX / Multi-Unit

Q series compatible with

Q IMPLANT® QZA

R series compatible with

REX Piezol Implant TL 1.8 External / Multi-Unit

S series compatible with

SHINHUNG®
SIC Invent® / Multi-Unit®
SIN® INTERNAL
SOUTHERN IMPLANTS® DEEP Conical / External / M-Series™ / IT
Connection™ / Tri-Nex™ / Multi-Unit®
SGS DENTAL® INTERNAL HEXAGON / Multi-Unit
STRAUMANN® ANGLE Multi-Unit / BLX® / TLX® / Conical Bone
Level® / synOcta® / Screw Retained Abutment® / Multi-Unit®
SNUCONE Internal Submerged / Multi-Unit
Sweden&Martina® CSR / Prama / Shelta / Premium Straight/SP
Premium Kohno / Premium One / P.A.D.r Multi-Unit

T series compatible with

TISMART2®
TITANIUM FIX EXTERNA
THOMMEN SPI®
TRATE® Internal / Multi-Unit
TRI® Narrow / Octa / Vent / Multi-Unit

W series compatible with

WARANTEC® Oneplant

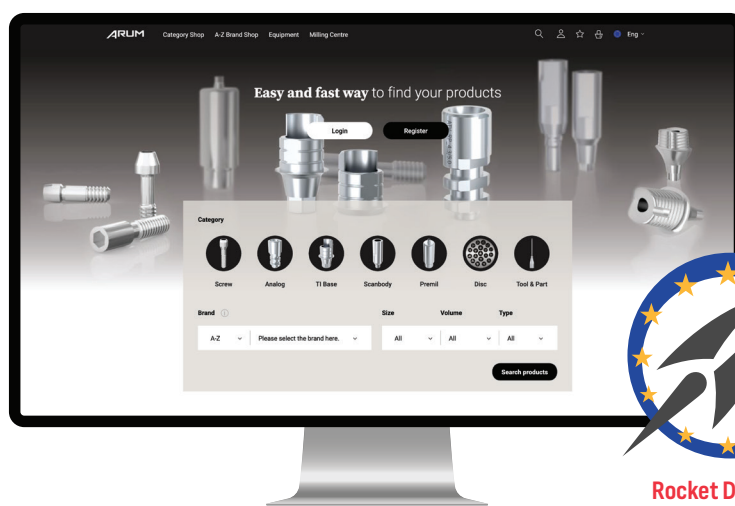
Z series compatible with

ZIACOM® ZIACOM® / External
ZIMMER® Eztetic™ / Swiss Plus™ / Spline™ A / Spline™ B /
Paragon™ / Tapered Screw-Vent® / Universal Abutment Multi-Unit /
Tapered Screw-Vent® Multi-unit

ARUM Dental Online Shop

- Ti-base, Lab Analog, Premilled Blank, Clinical Screw, Scanbody, Tool & Part and Dental CAD/CAM Material
- Over 500 compatible implant systems
- More than 3,000 component products
- Easy product search through multi-filtering
- EN/DE/FR 3 language support online shop
- Mobile Shop is ready - iOS / Android

www.arumdentalshop.com



Rocket Delivery
Orders by 14:30 (CET), Same day dispatch

ARUM Dental Shop Application

*Dental Shop
at your finger tip!*

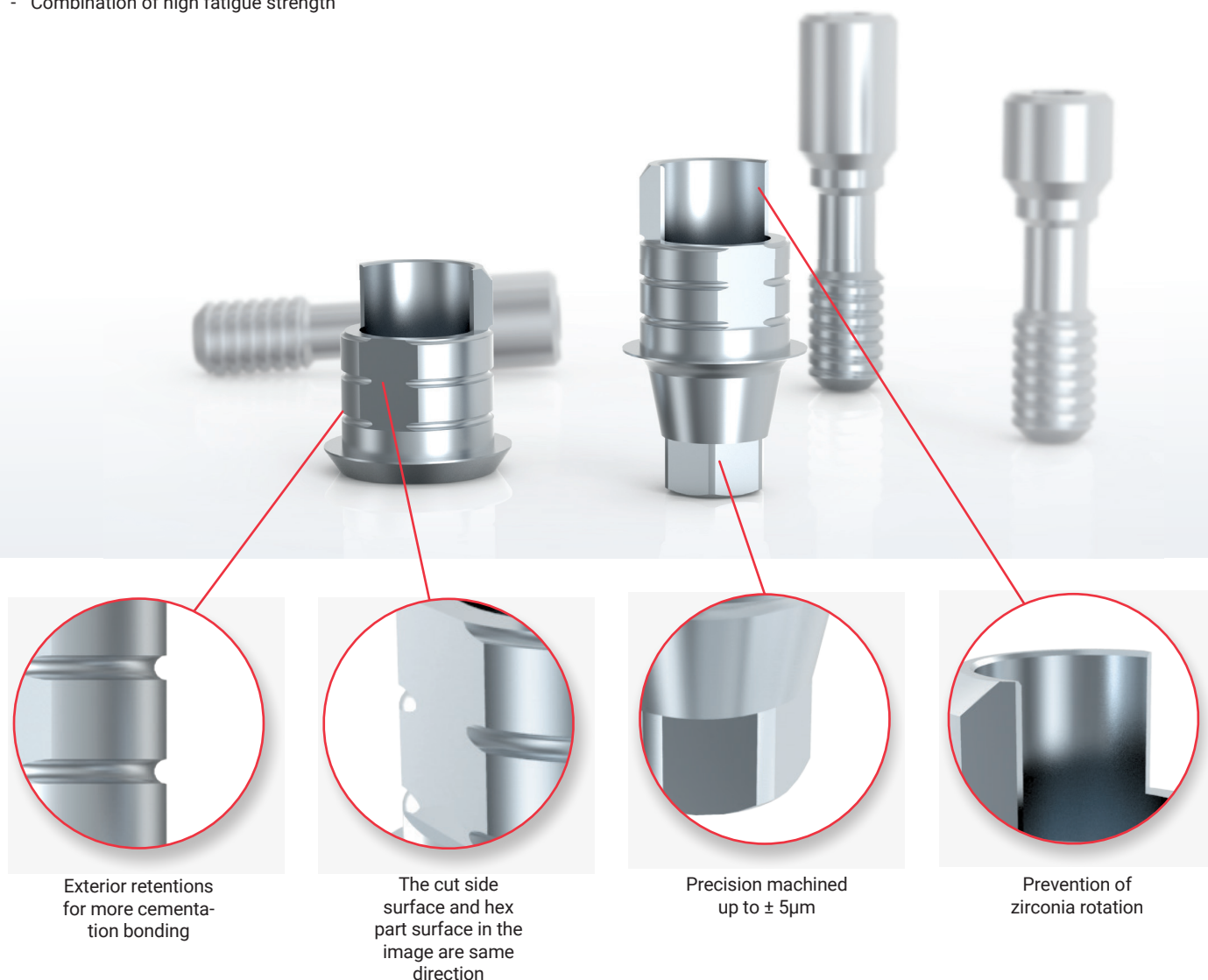


Download App Here!



Angled Ti-base

- Raw Material Ti 6Al-4V ELI (ASTM F 136) Supplied by Germany
- Industry's largest implant system compatibility
- Superior level of biocompatibility
- Combination of high fatigue strength

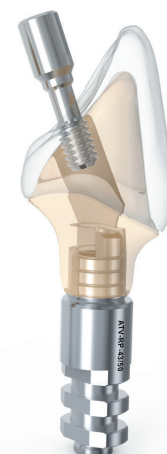


2 Clinical Screws Included



Straight Screw

Same as the original screw design



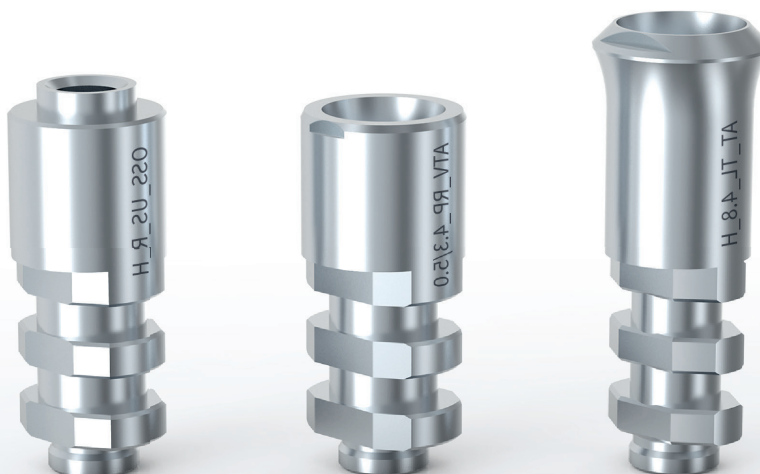
Angled Screw

- Raw Material Stainless Steel 303F
- Industry's largest implant system compatibility
- Precision machined up to $\pm 5\mu\text{m}$
- For 3D print & Stone model

ARUM Identification Code

compatible with
NOBEL BIO CARE® Active™ RP 4.3/5.0

ATV-RP-43/50

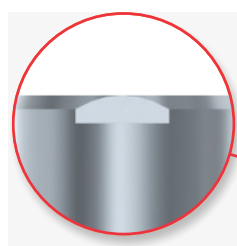


**Stone
Model**

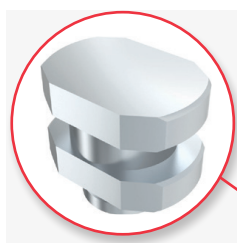
**3D Print
Model**



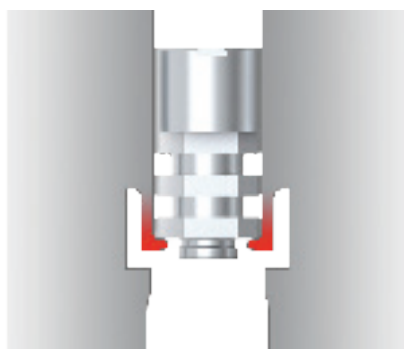
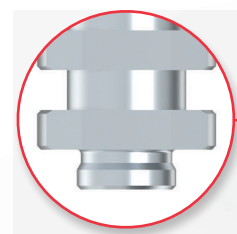
Position Indicator
3D print & stone model



Antitotate Design



Level Stopper
for 3D print model &
stone model



**3D Print Model
with Click System**

Pre-milled Blank

- Raw Material Ti 6Al-4V ELI (ASTM F 136) Supplied by Germany
- Industry's largest implant system compatibility
- Securement of quality through full-scale inspection
- Precision machined up to $\pm 5\mu\text{m}$
- Diameter 10mm, 14mm

2 Clinical Screws Included

- Same as the original screw design

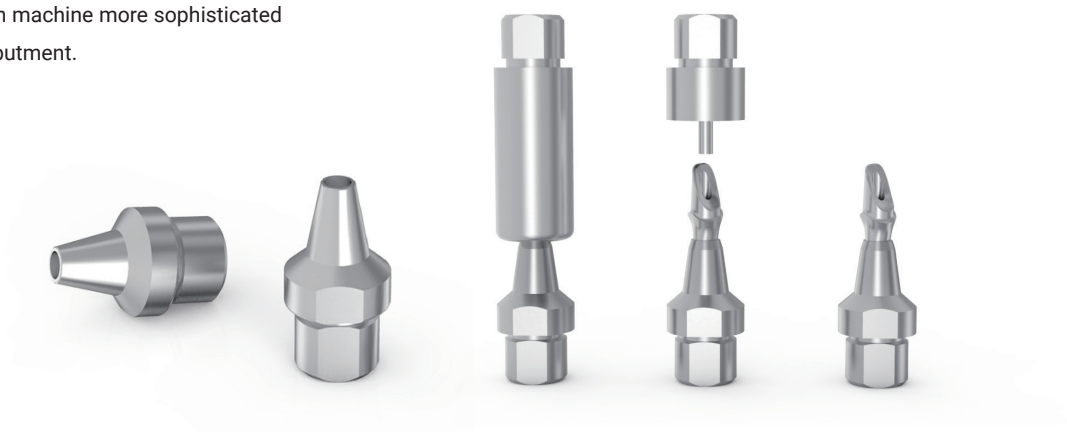


Diameter 10mm,14mm

We provide diameter of 10 and 14 mm for you to make Customized Abutments appropriate for various conditions of teeth. As they are compatible with more than 500 implant systems, you can machine using ARUM equipment.

Attachment

With use of Attachment, you can machine more sophisticated and near-perfect Customized Abutment.



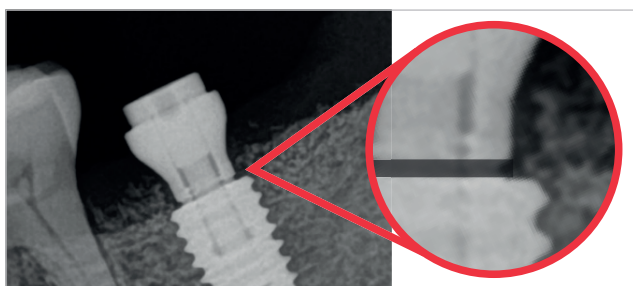
Healing Scanbody

- Raw Material Ti 6Al-4V ELI (ASTM F 136) Supplied by Germany
- Accurate tightening indicator "A Line"
- Easy and fast scan data matching
- Minimal gingival pressure and securement of gingiva



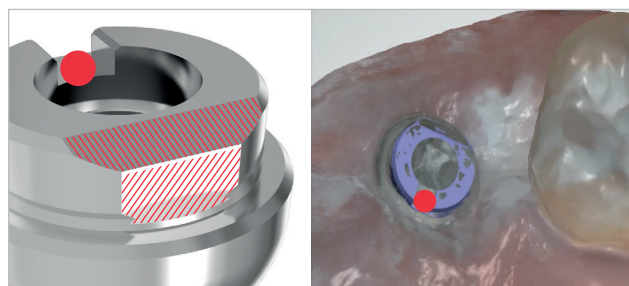
A Line

Indexes for the accurate fastening of implant fixtures and oral scan bodies and the prevention of the rotation of customised abutments.



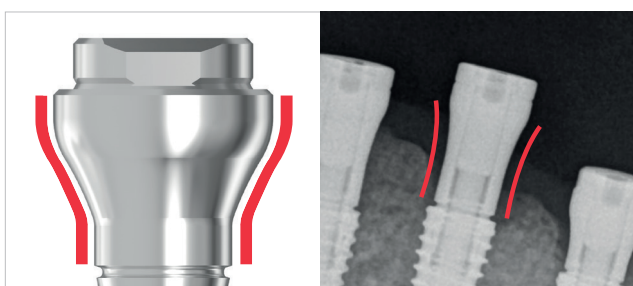
Easy and accurate matching

Easy and accurate scan data and library matching by nuts, D-cut and slope.



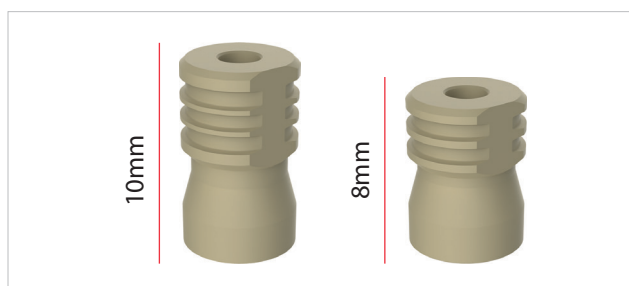
Concave Line

Concave Line to increase the completeness of dental procedure. Minimization of gingival pressure. Securement of thick gingiva.



Healing Scanbody Holder

Easy connect to fixture with intraoral scanbody holder. It is good for the complex case like molar procedure. Possibility to select a suitable size with each different oral cavity.



Model / Intraoral Scanbody

- Raw Material Stainless Steel 303F
- Supports with the industry's largest number of implant systems and libraries



Free Library setup by remote support

ARUM technical support team will securely setup the library files into your PC through a remote connection to start your design right away.

800+ Implant Connections

exocad

3shape

dental wings

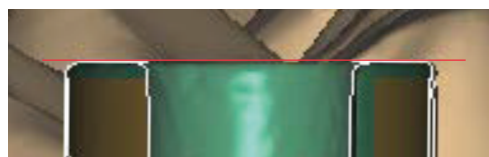
High Accuracy



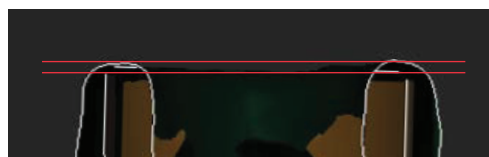
WHY

Arum scanbodies are
METAL?

In comparison to PEEK, one can always rely on the exceptional precision and unparalleled wear-resistance from the metal scanbody.



Arum Metal Scanbody



PEEK / Soft Material Scanbody

Screw

- Raw Material Ti 6Al-4V ELI (ASTM F 136) Supplied by Germany
- All hand inspection of thread
- Industry's largest implant system compatibility
- Precision and intensity of illumination
- Implement inspection with 150% value of original torque
- Same as the original screw design



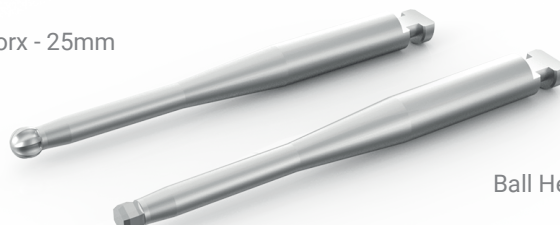
Clinical Driver

- Use of Trimrite with excellent corrosion resistance
- Easy and simple cleaning
- For angled screw channels
- Heat treatment and hardness of 50 or more



Clinical Screw Driver tip (Machining type)

Ball Torx - 25mm



Ball Hex - 25mm

Lab Driver



Screw Driver Tips

- Place the model scanbody and the abutment
- 10 types of tips (compatible with the various implant systems)



Analog Insertion Tips

- Place the lab analog to 3D printed model
- Easy and safe to place the lab analog
- Prevent damage of the lab analog internal thread
- 5 types of tips (compatible with the various implant systems)













Torque Adapter

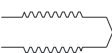
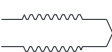
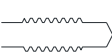
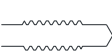
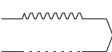
- For clamping Attachment and Premill for connectorless milling (with 0.4Nm torque)
- Prevent screw loosening during milling



Screw Driver Tips Line-Up

	SIZE	COLOR	Compatible Implant System
	Hex 1.0	Blue	DENTIUM® NR Line / DENTSPLY® Ankylos® C/X Implant etc
	Hex 1.2	Purple	ADIN® TOUAREG™ S&OS/ANTHOGRYR ANTHOFIT / BIOMET 3i® Certain/ BIOMET 3i® EXTERNAL HEX / BTI INTERNAL® / COWELLMED® INNO Internal / DENTIS® i-Clean / DENTSPLY® Xive® / DIO®UF / Global D® Tekka® In-Kone / MEGAGEN® AnyONE / MEGAGEN® Anyridge® / MEGAGEN® Anyridge® MEGAGEN®Extra EZ POST / MEGAGEN® EZ Plus / MEGAGEN® Rescue / NEOBIOTECH® / OSSTEM® GS(TS) / OSSTEM® SS / OSSTEM® US / SHINHUNG® / SIC Invent®/SOUTHERN IMPLANTS MSc EXTERNAL HEX / WARANTEC®Oneplant etc
	Hex 1.25	Black	BEGO® Semados/ BIOHORIZONS® External® / BIOHORIZONS® Internal® / DENTIS® s-Clean / LASAK Bioniq® etc.
	Hex 1.27	Red	ANTHOGRYR AXIOM/Alpha-Bio Tec®Internal Hex / ASTRA TECH™ OsseoSpeed™ TX / CAMLO®CAMLO®/ CAMLOG®CONELOG® / CORTEX™ / DEEP® / DENTIUM® SimpleLine / DENTIUM® SuperLine / EBI®/ IMPLANT DIRECT®Legacy™ / MIS® C1 / MIS®Internal Hexagon./ ZIMMER®Spline A / ZIMMER®Spline B / ZIMMER®Tapered Screw-Vent® etc.
	Hex 1.3	Green	ASTRA TECH™ OsseoSpeed™ EV / CLC Conic / DYNA Pushin Octalock® / KENTEC® / PLATON® Type IV Pro / Sweden & Martina etc
	Torx 1.7	Brown	STRAUMANN® Bone Level ® / STRAUMANN® ConicalBone Level ® / STRAUMANN® synOcta® etc.
	Torx 1.5 (Star)	Yellow	ADIN® CLOSEFIT™ / NOBEL BIO CARE® Active™ / NOBEL BIO CARE® Branemark ® / NOBEL BIO CARE® Replace Select™ / NEOSS Pro Active® etc.
	Cross	Gray	THOMMEN SPI® etc
	Ball Torx	Orange	1. Most of angled screws of ARUM Ti-base (screw head size should be more than 2.1mm) 2. ALL IMPLANT SYSTEM FOR DISK ANGULATED SCREW CHANNELS
	Ball Hex	White	Some of angled screws of ARUM Ti-base (screw head size should be less than 2.1mm) *Please visit our website to see the list.

Analog Insertion Tips Line-Up

	SIZE	COLOR	Compatible Implant System
	M2.0*P0.40	Cocoa	Osstem GS Regular, Dentium Super line, Megagen Anyone, Dentis S-clean, Straumann Tissue level, etc.
	M1.8*P0.35	Light Green	Zimmer TSV, Megagen Anyridge, Biohorizon Internal, Bego Semados, etc.
	M1.6*P0.35	Pink	Straumann Bone level, Osstem GS Mini, Nobel biocare Active Mini, Dentsply Xive, Neodent GM, etc.
	M1.4*P0.30	Sky Blue	Straumann Bone level 2.9, Dio UF Narrow, Megagen Mini, Astra YellowMost of Multi unit, etc.
	M2.5*P0.45	Ivory	Osstem US Wide, Nobel biocare Branemark WP, etc.

** Please aware of the color of tips.

** Contact us for a complete list of implant compatibility.

Torque Adapter

Torque	0.4 Nm
--------	--------

WE SHARE THE EXPERIENCE
with
PERFECTION

GET IN TOUCH

Arum 3D Solutions Ltd.

+44 (0)207 388 1390



Scan for whatsapp!